

Technical data sheet

Product features



Rack conveyor dishwasher 160 racks/hour cold water, left exit

Model	SAP Code	00013728
--------------	-----------------	----------



- To the product for free: 1x RM Clean+ 12 kg (00012271) and 1x RM Rinse+ 10 kg (00012273)
- Display type: ProSmart LED interface
- Number of programs: 4
- Number of skin: 2
- Maximal rack feed [racks/h]: 160
- Door clear height [mm]: 450
- Rack size [mm]: 500 x 500
- Water consumption of the washing cycle [l/basket]: 1,1 - 2,2
- Washing cycle time [s/basket]: 22 - 60
- Detergent and rinse pump system: ProDose - accurate dosing with a peristaltic pump
- Wash pump type: two-way - DuoFlow
- Detergent dispenser: Yes
- Rinse aid dispenser: Yes

SAP Code	00013728	Boiler power [kW]	19.000
Net Width [mm]	1150	Basin volume [l]	70
Net Depth [mm]	770	Tank power [kW]	10.500
Net Height [mm]	1615	Water consumption of the washing cycle [l/basket]	1,1 - 2,2
Net Weight [kg]	192.00	Washing cycle time [s/basket]	22 - 60
Power electric [kW]	31.700	Maximal rack feed [racks/h]	160
Loading	400 V / 3N - 50 Hz	Door clear height [mm]	450
Boiler capacity [l]	17.00	Rack size [mm]	500 x 500

Technical data sheet

Technical drawing

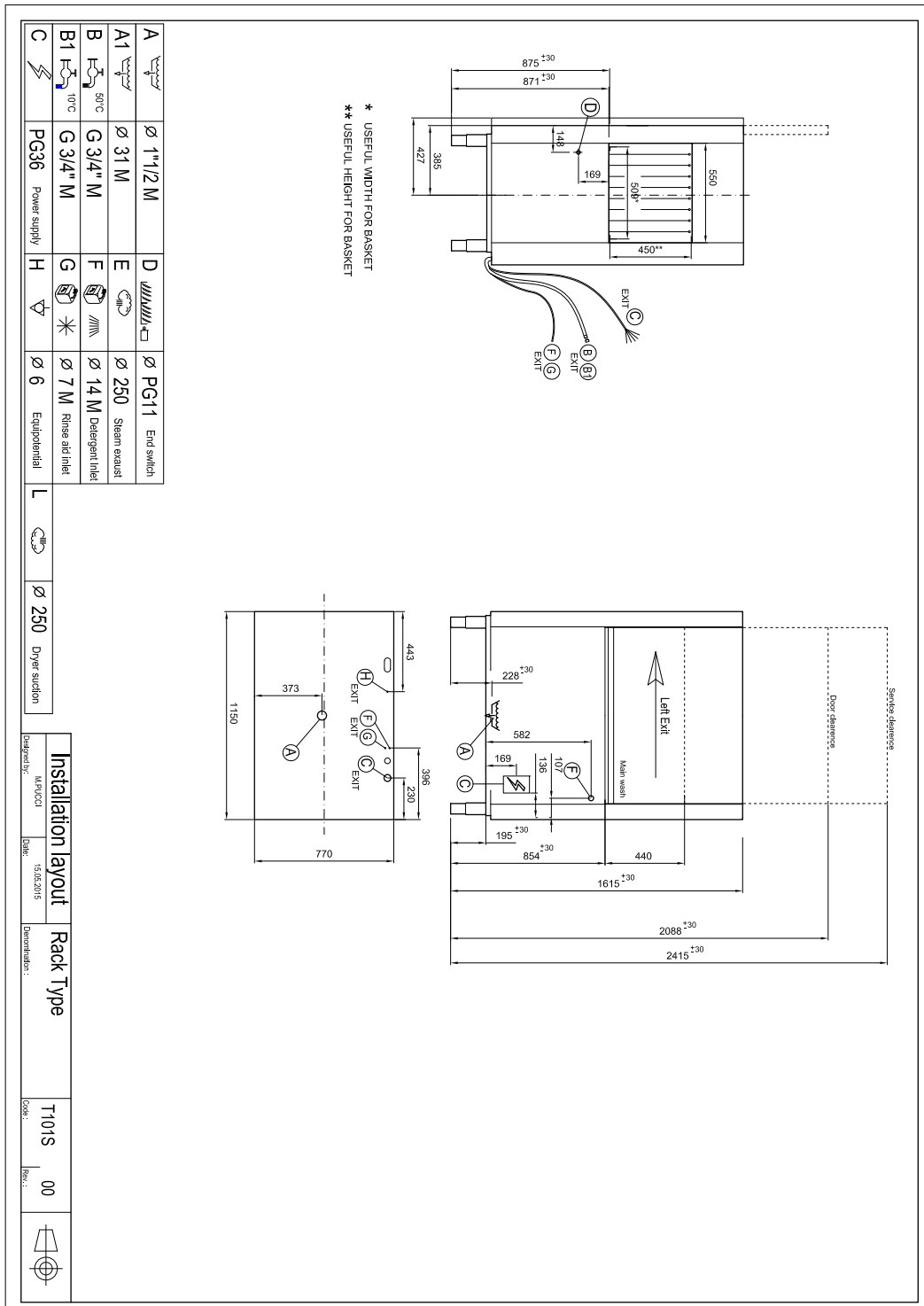


Rack conveyor dishwasher 160 racks/hour cold water, left exit

Model

SAP Code

00013728



Technical data sheet

Product benefits



Rack conveyor dishwasher 160 racks/hour cold water, left exit

Model

SAP Code

00013728

1

Stainless steel outer shell construction

- round construction with stainless steel, rounded edges, Deep-drawn bathtub
- easy cleaning, high hygiene standard, long service life

2

LED Display

- proScreen 4 local display + 2 LED strips
- easy control of the dishwasher operation
 - continuous information on the status of the wash cycle
 - diagnostics in the event of a fault

3

Detergent dispensers

- two detergent and rinse aid dispensers
- precise chemical dosing by ProDose - precise dosing system for detergent and rinse aid by peristaltic pump setting of values via control panel

4

Double filter system

- the chamber filter and the waste filter together with the ArchiMedes system provide a discharge system with increased water purification efficiency
- higher washing efficiency; longer life of the washing bath

5

Energy saving

- Energy Saving energy saving system due to lowering the temperature of the boiler
- cost saving

6

Protection of fragile dishes

- softStart system of gradual start of washing programs to protect fragile dishes
- protects stemmed glasses and other fragile utensils

7

Possibility of recovery

- saving up to 40% of boiler energy
improves the comfort environment of the workplace
environment without steam
saves water
- saving on energy and water costs; environmentally friendly system; safe system; pleasant workplace

8

Fast heating

- Performance management allows the current running of the boiler and basins body
- quick first warm-up of the dishwasher
 - smooth operation

9

Air break tank

- the open system of the boiler rinse, in cooperation with the rinse pump, ensures a constant pressure and temperature of the rinse
- possibility to use in HACCP systems water temperature suitable for sterilization

10

Sliding system

- a sliding system that moves the baskets through individual washing zones, the possibility to connect the drive to automatic tables
- quick distribution of dirty dishes

Technical data sheet

Technical parameters



Rack conveyor dishwasher 160 racks/hour cold water, left exit

Model

SAP Code

00013728

1. SAP Code:

00013728

2. Net Width [mm]:

1150

3. Net Depth [mm]:

770

4. Net Height [mm]:

1615

5. Net Weight [kg]:

192.00

6. Gross Width [mm]:

1280

7. Gross depth [mm]:

920

8. Gross Height [mm]:

1800

9. Gross Weight [kg]:

218.00

10. Device type:

Electric unit

11. Control type:

Digital

12. Material:

AISI 304

13. Power electric [kW]:

31.700

14. Loading:

400 V / 3N - 50 Hz

15. Number of programs:

4

16. Opening of device:

Retractable up

17. Door clear height [mm]:

450

18. Inlet pressure [bar]:

1-4

19. Adjustable feet:

Yes

20. Number of skin:

2

21. Modular construction:

Yes

22. Pre-wash module:

No

23. Maximal rack feed [racks/h]:

160

24. Self-cleaning cycle:

No

25. Boiler capacity [l]:

17.00

26. Boiler power [kW]:

19.000

27. Basin volume [l]:

70

28. Tank power [kW]:

10.500

Technical data sheet

Technical parameters



Rack conveyor dishwasher 160 racks/hour cold water, left exit

Model	SAP Code	00013728
--------------	-----------------	----------

29. Number of washing arms:

3

30. Number of rinsing arms:

2

31. Washing arm type:

Firm

32. Washing arm material:

Stainless steel

33. Atmospheric boiler with rinse pump:

Yes

34. Rinsing arm type:

Firm

35. Rinsing arm material:

Stainless steel

36. Deep drawn tank:

Yes

37. Rack support:

welded

38. Tank surface strainers:

stainless steel

39. Boiler thermostat adjust:

Yes

40. Rack feed capacity:

60-80-120-160

41. Detergent and rinse pump system:

ProDose - accurate dosing with a peristaltic pump

42. Hot water electric valve:

Yes

43. Rack size [mm]:

500 x 500

44. Min supply water temperature [°C]:

10

45. Max supply water temperature [°C]:

40

46. Display type:

ProSmart LED interface

47. USB port:

Yes, for Firmware actualisation

48. Self-diagnostics:

Yes

49. Double rinse:

No

50. Wash pump type:

two-way - DuoFlow

51. Detergent dispenser:

Yes

52. Rinse aid dispenser:

Yes

53. Water consumption of the washing cycle [l/basket]:

1,1 - 2,2

54. Washing cycle time [s/basket]:

22 - 60

55. Rinse water temperature [°C]:

82

56. Standard equipment for device:

1x glass basket, 1x plate basket, 1x cutlery basket

Technical data sheet

Technical parameters



Rack conveyor dishwasher 160 racks/hour cold water, left exit

Model

SAP Code

00013728

57. Program ProSpeed:

No

58. Program ProFessional:

No

59. Program ProFessional 2:

No

60. Program ProFessional 4:

No

61. Program ProFessional 6:

No

62. Program ProFessional 8:

No

63. Program ProFessional 10:

No

64. Program ProTemp:

No

65. Program ProSelf:

No

66. Program ProClean:

No

67. Program ProDrain:

No

68. Program ProEco:

No

69. Program ProNew:

No

83. Program Glasses:

Yes

70. Program ProLong:

No

71. Program ProGlass:

No

72. Program ProPlates:

No

73. Program ProCold:

No

74. Program ProWater:

No

75. Program ProActive:

No

76. Program ProActive 5:

No

77. Program ProActive 7:

No

78. Program ProSteel:

No

79. Program ProSan:

No

80. Program High Capacity:

Yes

81. Program General purpose:

Yes

82. Program Prolonged contact (DIN 10534):

Yes

85. Water supply connection:

3/4"

Technical data sheet

Technical parameters



Rack conveyor dishwasher 160 racks/hour cold water, left exit

Model

SAP Code

00013728

84. Cross-section of conductors CU [mm²]:

16

– Výkon (kW): 6,6-9 (230 V); 11-15 (400 V)

86. Diameter nominal:

DN 50